

A GLIMPSE INTO FRENCH AGRICULTURE

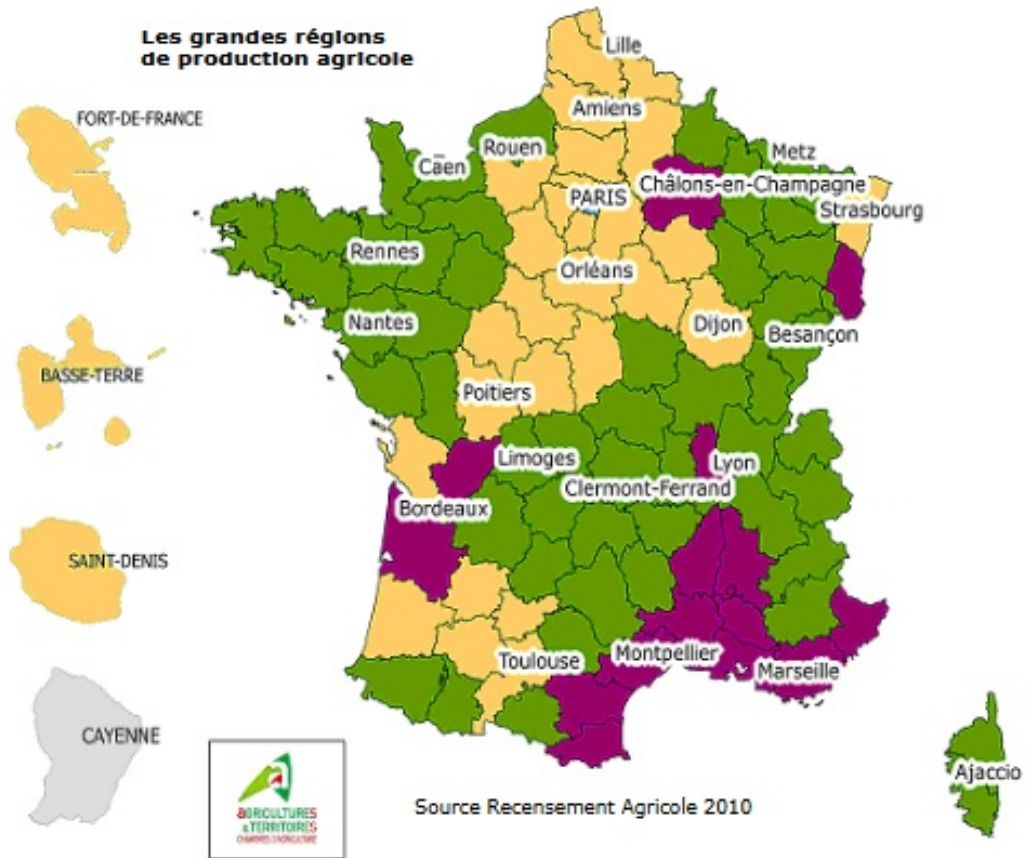


AGRICULTURE AND FRENCH TERRITORY

- 40% of French soils are natural areas.
- Agriculture covers 53% of the territory
 - ❖ 7.5% of the UAA is in organic Agriculture
 - ❖ 45% of the agricultural area used for field crops
- 6% of the country's UAA is irrigated.
- Agriculture and forestry are sources of 16% of GHG emissions in France.
- Continuous decline in biodiversity in agricultural areas

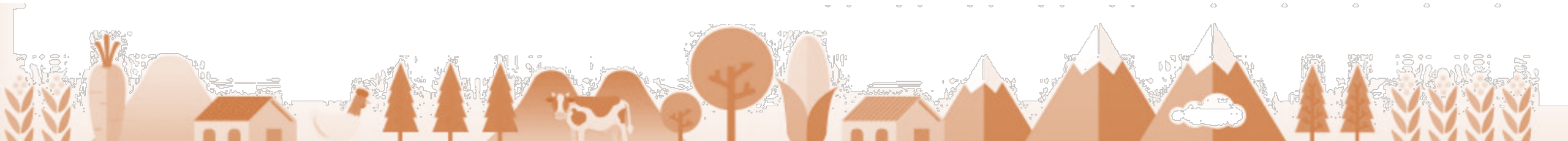
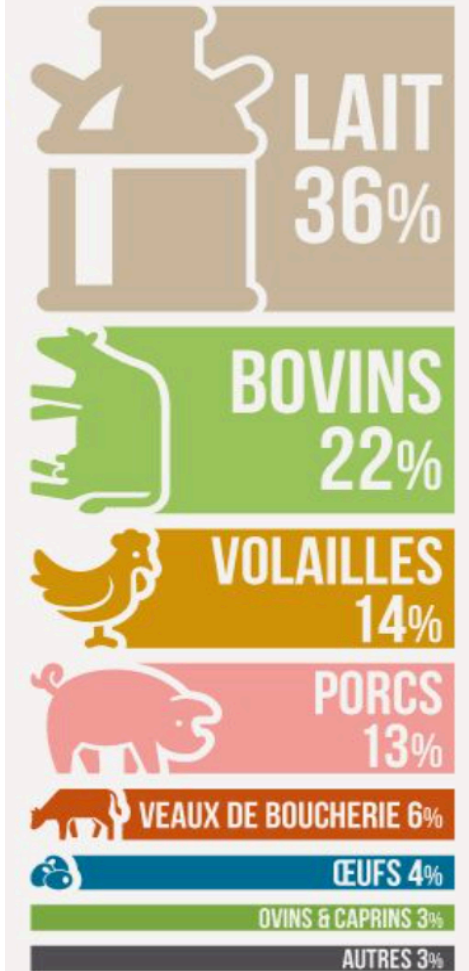


PRODUCTION



- Field crops
- Livestock farming
- Permanent crops

PRINCIPALES PRODUCTIONS ANIMALES



FRENCH FARMS PROFILE

- The medium size of a farm in France is around **62 hectares.**
- There are 436 000 farms in France
 - ❖ 2/3 are individual farms, and the rest are organized into groupings.
- 922000 people live and work in French farms
 - ❖ 63% are Farmers/Farm manager



POTRAIT OF A FRENCH FARMER

- The average age of the French farmer is 52
- 45% of all the active agricultural population will be 65 in 2026.
- Women represent 1/3 of the active agricultural population
- 1/3 of farmers had a monthly income of less than 350 euros... ..and it is the socio-professional category with the highest number of suicides.



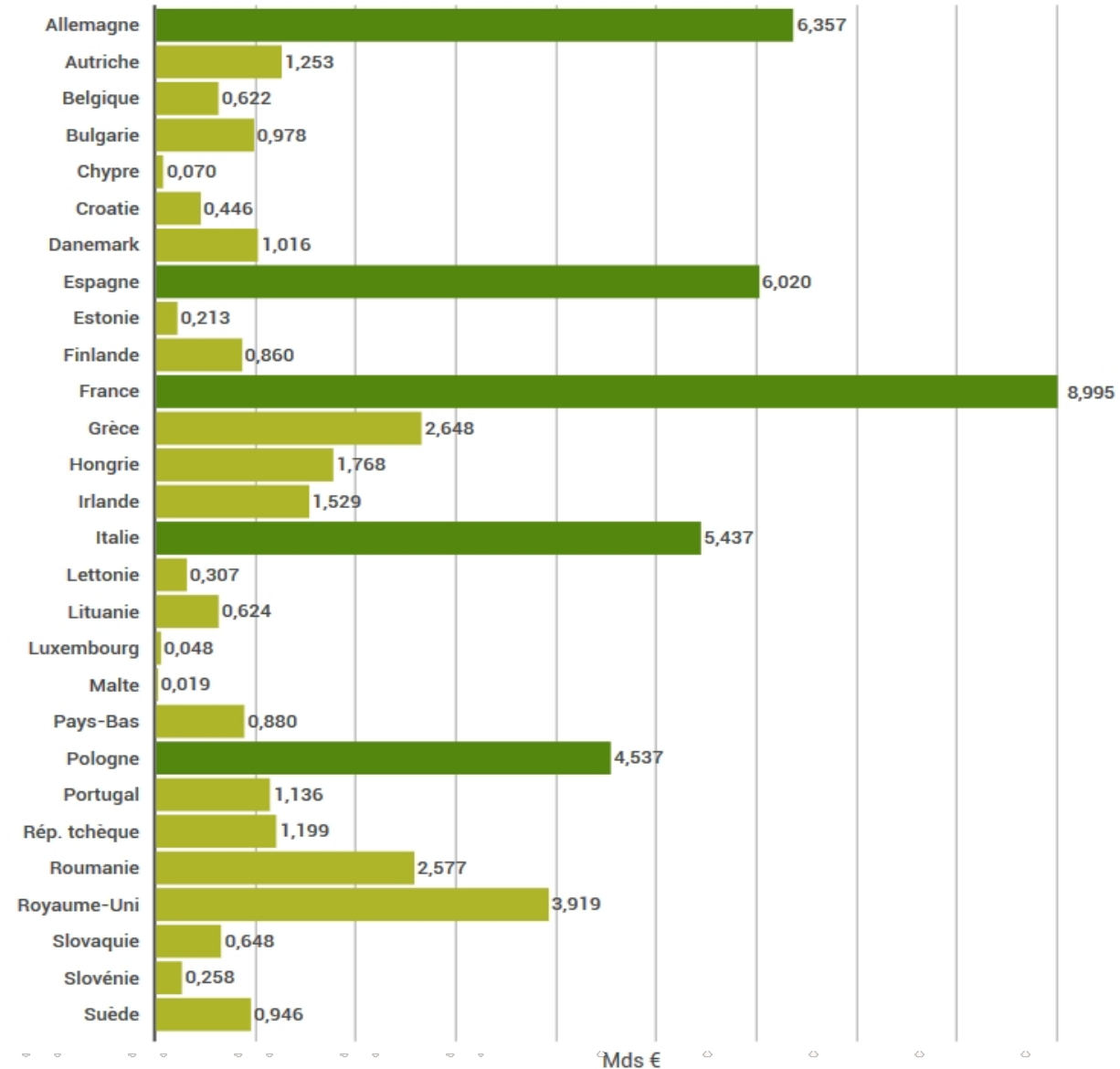
AGRICULTURE AND TRADE

- Agri-food products are France's third largest trade surplus
- France is the world's 6th largest exporter of agri-food products.
- 5th largest wheat producer in the world after China, India, Russia and the USA
- 5.6% of world exports of agri-food products are French



FRANCE AND THE CAP

- 9 billion of CAP funds
- France allocates 85% of the CAP budget to direct income support for Farmers



FRENCH AGRICULTURE IN EUROPEAN UNION

- France accounts for 18% of European agricultural production.
- Germany is France's main European customer, followed by Belgium, Germany and the Netherlands.
- France's main European suppliers are Spain, Belgium, Germany and the Netherlands.
- Beverages, cereals and dairy products are the main products exported to the EU



FARMERS UNION

- 4 main unions: JA (50,000 members), FNSEA (210,000 members), Confédération paysanne (15,000 members), Coordination rurale (15,000 members)
- A system of management of agricultural policies via consular chambers, whose management is linked to professional elections.
- A part of the unions annual budget is calculated according to the representativeness at this elections



SOURCES/MORE INFO

- French Ministry of agriculture : <https://agriculture.gouv.fr>
- MSA : <https://www.msa.fr/lfy>
- Plateforme Pour une Autre PAC : <https://pouruneautrepac.eu/comprendre-la-pac/chiffres-cles/>
- Le Monde : https://www.lemonde.fr/economie-francaise/article/2018/02/24/dix-chiffres-cles-sur-l-agriculture-francaise_5261944_1656968.html
- Interbev : <http://www.interbev.fr/de-la-consommation-totale-de-viande-chiffres-cles-de-la-filiere-viande-chevaline/>
- APCA : <https://chambres-agriculture.fr>
- Passion Céréale : <https://www.passioncereales.fr>

