



# *Trends in Regenerative Farming*



- **Nuffield Contemporary  
Scholars Conference**

16 March / Tim O'Grady





# Partnering with Innovation (PWI)

- Linking leading growers
- Focus on building soil health
- Challenges for large farms
- Not 'one size fits all'



Holistic approach to soil health

# Cover Crops

- Trend to multi-species mixtures
- Improved soil carbon and crop productivity
- Understanding aim and species selection
- Irrigation and seed availability often limiting



Mixed species cover crop in macadamia, Bangalow NSW  
(soil carbon +2.5%)



# Cover Crops

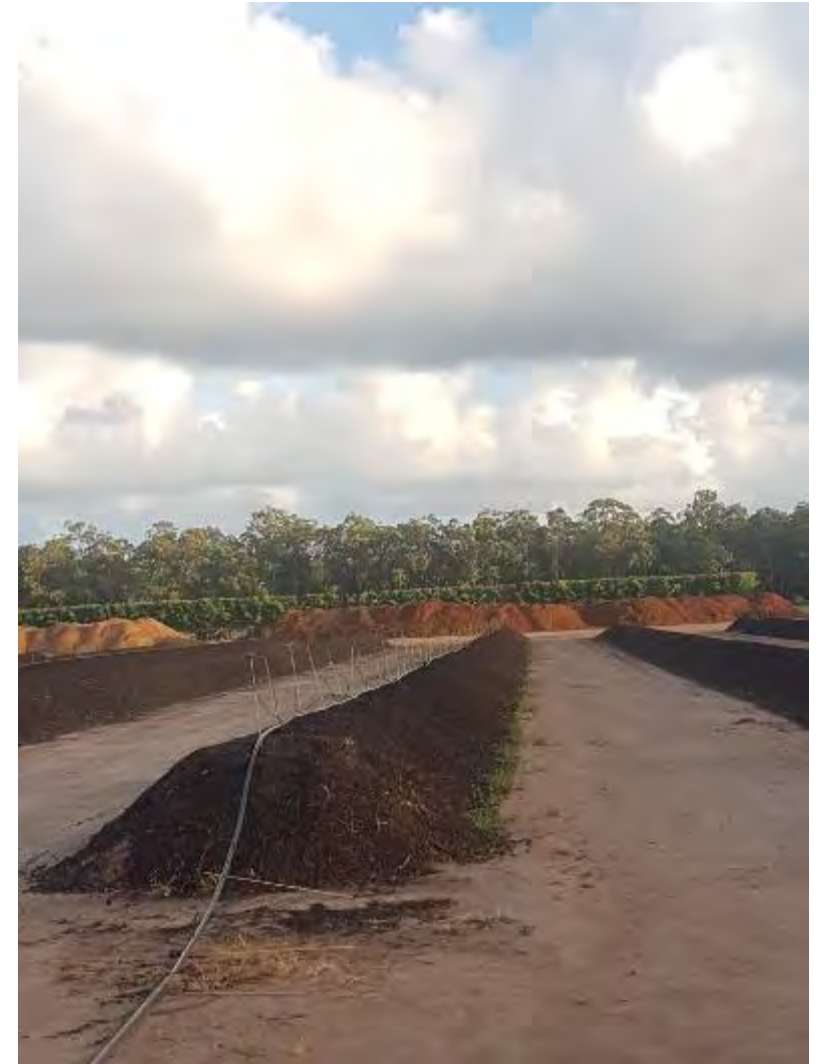


Mixed species (Sunn Hemp, Millet, Tillage Radish) cover crop planted into corn in Kalbar, QLD



# Compost

- On-farm compost production
- Increased carbon and nutrient availability
- Increased crop resilience to weather extremes
- Woody material and transport cost the challenge



On-farm compost production in avocados, Childers QLD  
(soil carbon:1.5%-3.1%)



# Minimum tillage

- Trend to controlled traffic (permanent beds)
- Vertical rather than horizontal tillage
- Strip tillage equipment, roller crimper
- Maximise benefit of cover crops



Park Organics, Meridian, CA  
(Increased soil carbon with cover crops and minimum tillage)

# Minimum tillage

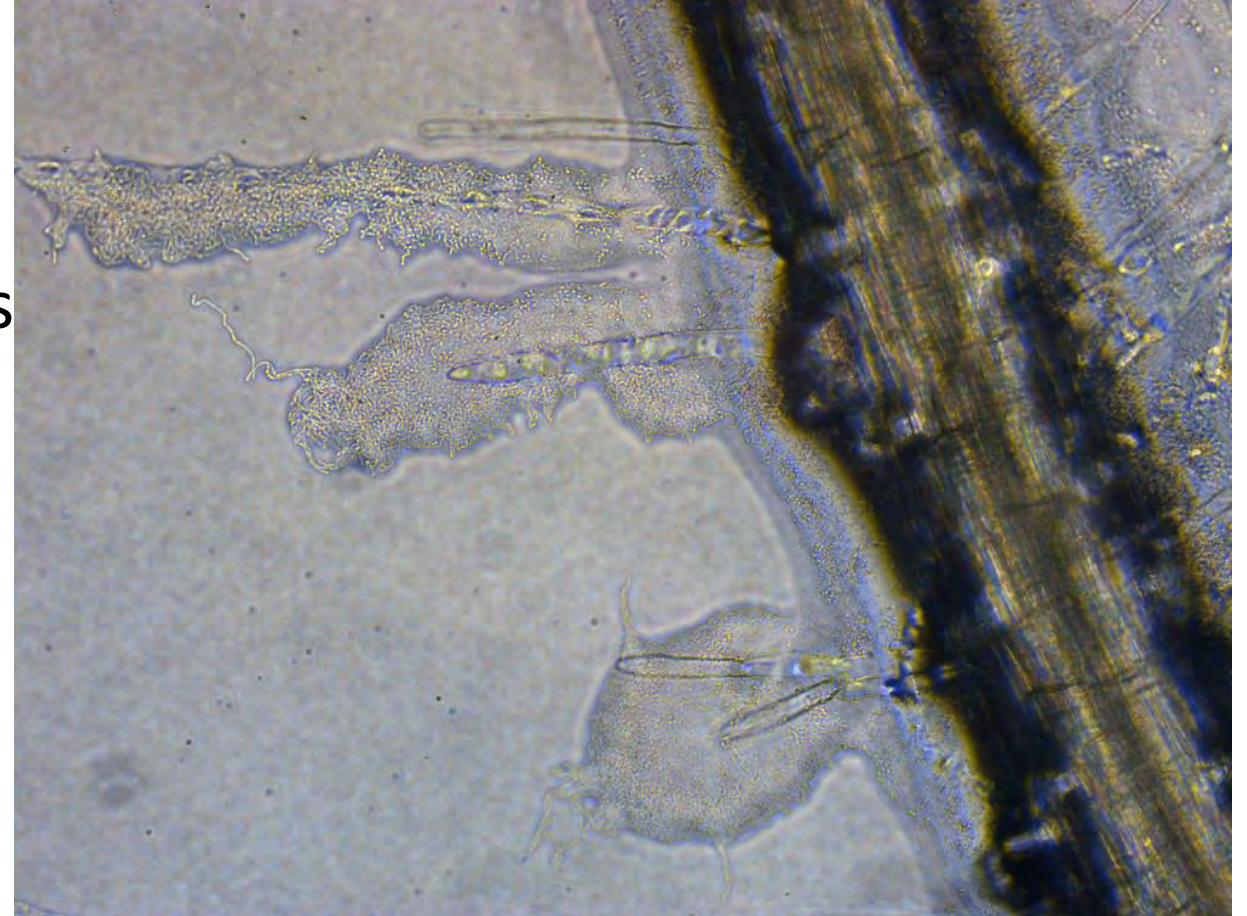


Rye corn cover crop, strip tilled and planted into cucumbers, Cowra NSW



# Biologics

- Complement holistic system approach
- Symbiotic relationship with roots
- Increase nutrient availability
- Uniformity, quality and nutrient density



*Bacillus amyloliquefaciens* QST 713 (Serenade® Prime)



# Biologics

Biological system\*  
+ Serenade Prime  
(14 Days after harvest)



Biological system\*  
- Serenade Prime  
(14 Days after harvest)



- Biologics complementary to shelf life in tomato production, Bowen QLD

\* Compost and cover crops



*Thank  
you*



[Twitter.com/Bayer4Crops](https://twitter.com/Bayer4Crops)  
[Twitter.com/cdixon21](https://twitter.com/cdixon21)

